

70. ЛИТОВКО

СЕМЬ НОТ

Сорбениана

**Упражнения для изучения
басового ключа
начинающими музыкантами**



ИЗУЧЕНИЕ БАСОВОГО КЛЮЧА (КЛЮЧ "ФА")

На первом этапе обучения игры на фортепиано некоторым детям трудно дается изучение нот в басовом ключе (ключ "ФА"). Некоторые педагоги сразу дают оба ключа, но если ребенок мал, можно постепенно вводить ноты басового регистра. Сборник "СЕМЬ НОТ" написан в басовом ключе и охватывает диапазон звуков от первой октавы до субконтроктавы. До этого ученик уже знает ноты в скрипичном ключе, переиграл большое количество пьес и его руки свободны. Если левая рука не вполне свободна, можно начинать игру упражнений с приема нон легато (не связно). Темп игры не быстрый. Для лучшего усвоения названия нот обязательно говорить вслух. При игре следить за правильной посадкой и положением левой руки (кисть свободная, локоть приподнят, пальцы округлые и не прогибаются в первой фаланге). Желаю юному музыканту быстро освоить ноты в басовом ключе.

Ю. Литовко

ПЕРВАЯ ОКТАВА



МАЛАЯ ОКТАВА



БОЛЬШАЯ ОКТАВА



УПРАЖНЕНИЯ ДЛЯ ЛЕВОЙ РУКИ

Все упражнения играть, называя ноты вслух

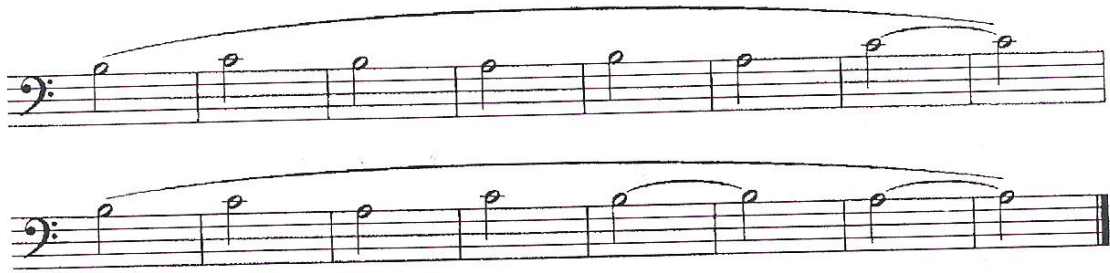
1. Ноты ДО-РЕ-МИ первой октавы в басовом ключе.

Exercise 1 consists of six staves of music in bass clef, 4/4 time. The notes D, E, F, G, A, B are written in the first octave. The first staff begins with a 4(3) fingering above the first note. Each staff contains two measures of music, with slurs and breath marks (V) indicating phrasing.

2.

Exercise 2 consists of three staves of music in bass clef, 2/4 time. The notes D, E, F, G, A, B are written in the first octave. The first staff begins with a 4(3) fingering above the first note. Each staff contains two measures of music with slurs.

6



6.



7. Ноты ДО-РЕ первой октавы и ЛЯ-СИ малой октавы



8. Ноты ДО первой октавы и СИ-ЛЯ-СОЛЬ малой октавы

Exercise 8 consists of four staves of music in bass clef, 4/4 time. The first staff starts with a '1' above the first note (C2) and has a slur over the first seven notes (C2, D2, E2, F2, G2, A2, B2). The second staff starts with a '2' above the first note (C2) and has two slurs: one over the first four notes (C2, D2, E2, F2) and another over the last four notes (D2, E2, F2, G2). The third staff starts with a '4' above the first note (C2) and has a slur over all seven notes (C2, D2, E2, F2, G2, A2, B2). The fourth staff has two slurs: one over the first four notes (C2, D2, E2, F2) and another over the last four notes (D2, E2, F2, G2).

9.

Exercise 9 consists of six staves of music in bass clef, 4/4 time. The first staff starts with a '1' above the first note (C2) and has a slur over the first seven notes (C2, D2, E2, F2, G2, A2, B2). The second staff has a slur over the first seven notes (C2, D2, E2, F2, G2, A2, B2). The third staff has two slurs: one over the first four notes (C2, D2, E2, F2) and another over the last four notes (D2, E2, F2, G2). The fourth staff has three slurs: one over the first four notes (C2, D2, E2, F2), one over the next four notes (D2, E2, F2, G2), and one over the last four notes (E2, F2, G2, A2). The fifth staff has two slurs: one over the first four notes (C2, D2, E2, F2) and another over the last four notes (D2, E2, F2, G2). The sixth staff has two slurs: one over the first four notes (C2, D2, E2, F2) and another over the last four notes (D2, E2, F2, G2).

10. Ноты СИ-ДО диэз-РЕ

Exercise 10 consists of three staves of music in bass clef, 2/4 time. The first staff begins with a triplet of eighth notes (C4, D4, E4) marked with a '3' above them, followed by a half note (F4), a quarter note (G4), and a half note (A4). The second staff continues with a quarter note (B4), a half note (C5), and a quarter note (D5). The third staff concludes with a quarter note (E5), a half note (F5), and a quarter note (G5).

11. Ноты СИ-ДО диэз-РЕ-МИ

Exercise 11 consists of three staves of music in bass clef, 2/4 time. The first staff begins with a group of four eighth notes (C4, D4, E4, F4) marked with a '4' above them, followed by a half note (G4), a quarter note (A4), and a half note (B4). The second staff continues with a quarter note (C5), a half note (D5), and a quarter note (E5). The third staff concludes with a quarter note (F5), a half note (G5), and a quarter note (A5).

12. Ноты ЛЯ-СИ-ДО

Exercise 12 consists of three staves of music in bass clef, 2/4 time. The first staff begins with a triplet of eighth notes (C4, D4, E4) marked with a '3(4)' above them, followed by a half note (F4), a quarter note (G4), and a half note (A4). The second staff continues with a quarter note (B4), a half note (C5), and a quarter note (D5). The third staff concludes with a quarter note (E5), a half note (F5), and a quarter note (G5).

13. Ноты ЛЯ-СИ-ДО-РЕ

Exercise 13 is written in bass clef with a 3/4 time signature. It consists of seven notes: F₂, G₂, A₂, B₂, C₃, D₃, and E₃. The notes are grouped by a slur, and a '4' is written above the first note, F₂.

14.

Exercise 14 is written in bass clef with a 4/4 time signature. It consists of seven notes: F₂, G₂, A₂, B₂, C₃, D₃, and E₃. The notes are grouped by a slur, and a '4' is written above the first note, F₂.

15. Ноты ЛЯ-СИ-ДО-РЕ-МИ

15. Ноты ЛЯ-СИ-ДО-РЕ-МИ

16.

16.

17. Ноты СОЛЬ-ЛЯ-СИ бемоль

17. Ноты СОЛЬ-ЛЯ-СИ бемоль

18.

Exercise 18 is written in bass clef with a 3/4 time signature. It consists of three staves. The first staff begins with a '4' above the first note. The notes are: G2 (quarter), A2 (quarter), Bb2 (quarter), C3 (quarter), D3 (quarter), Eb3 (quarter), F3 (quarter), G3 (quarter). The second staff continues: G3 (quarter), F3 (quarter), Eb3 (quarter), D3 (quarter), C3 (quarter), Bb2 (quarter), A2 (quarter), G2 (quarter). The third staff continues: G2 (quarter), F3 (quarter), Eb3 (quarter), D3 (quarter), C3 (quarter), Bb2 (quarter), A2 (quarter), G2 (quarter).

19. Ноты СОЛЬ-ЛЯ-СИ бемоль-ДО

Exercise 19 is written in bass clef with a 2/4 time signature. It consists of three staves. The first staff begins with a '4' above the first note. The notes are: G2 (quarter), A2 (quarter), Bb2 (quarter), C3 (quarter), D3 (quarter), Eb3 (quarter), F3 (quarter), G3 (quarter). The second staff continues: G3 (quarter), F3 (quarter), Eb3 (quarter), D3 (quarter), C3 (quarter), Bb2 (quarter), A2 (quarter), G2 (quarter). The third staff continues: G2 (quarter), F3 (quarter), Eb3 (quarter), D3 (quarter), C3 (quarter), Bb2 (quarter), A2 (quarter), G2 (quarter).

20.

Exercise 20 is written in bass clef with a 2/4 time signature. It consists of four staves. The first staff begins with a '4' above the first note. The notes are: G2 (quarter), A2 (quarter), Bb2 (quarter), C3 (quarter), D3 (quarter), Eb3 (quarter), F3 (quarter), G3 (quarter). The second staff continues: G3 (quarter), F3 (quarter), Eb3 (quarter), D3 (quarter), C3 (quarter), Bb2 (quarter), A2 (quarter), G2 (quarter). The third staff continues: G2 (quarter), F3 (quarter), Eb3 (quarter), D3 (quarter), C3 (quarter), Bb2 (quarter), A2 (quarter), G2 (quarter). The fourth staff continues: G2 (quarter), F3 (quarter), Eb3 (quarter), D3 (quarter), C3 (quarter), Bb2 (quarter), A2 (quarter), G2 (quarter).

21. Ноты СОЛЬ-ЛЯ-СИ бемоль-ДО-РЕ

27. Ноты МИ-ФА диез-СОЛЬ

30.

Exercise 30 consists of five staves of music in bass clef, 4/4 time, and one sharp (F#). The first staff begins with a fingering '5' above the first note. The notes are: G2, A2, B2, C3, D3, E3, F#3, G3, A3, B3, C4, D4, E4, F#4, G4, A4, B4, C5, D5, E5, F#5, G5, A5, B5, C6, D6, E6, F#6, G6, A6, B6, C7, D7, E7, F#7, G7, A7, B7, C8, D8, E8, F#8, G8, A8, B8, C9, D9, E9, F#9, G9, A9, B9, C10, D10, E10, F#10, G10, A10, B10, C11, D11, E11, F#11, G11, A11, B11, C12, D12, E12, F#12, G12, A12, B12, C13, D13, E13, F#13, G13, A13, B13, C14, D14, E14, F#14, G14, A14, B14, C15, D15, E15, F#15, G15, A15, B15, C16, D16, E16, F#16, G16, A16, B16, C17, D17, E17, F#17, G17, A17, B17, C18, D18, E18, F#18, G18, A18, B18, C19, D19, E19, F#19, G19, A19, B19, C20, D20, E20, F#20, G20, A20, B20, C21, D21, E21, F#21, G21, A21, B21, C22, D22, E22, F#22, G22, A22, B22, C23, D23, E23, F#23, G23, A23, B23, C24, D24, E24, F#24, G24, A24, B24, C25, D25, E25, F#25, G25, A25, B25, C26, D26, E26, F#26, G26, A26, B26, C27, D27, E27, F#27, G27, A27, B27, C28, D28, E28, F#28, G28, A28, B28, C29, D29, E29, F#29, G29, A29, B29, C30, D30, E30, F#30, G30, A30, B30, C31, D31, E31, F#31, G31, A31, B31, C32, D32, E32, F#32, G32, A32, B32, C33, D33, E33, F#33, G33, A33, B33, C34, D34, E34, F#34, G34, A34, B34, C35, D35, E35, F#35, G35, A35, B35, C36, D36, E36, F#36, G36, A36, B36, C37, D37, E37, F#37, G37, A37, B37, C38, D38, E38, F#38, G38, A38, B38, C39, D39, E39, F#39, G39, A39, B39, C40, D40, E40, F#40, G40, A40, B40, C41, D41, E41, F#41, G41, A41, B41, C42, D42, E42, F#42, G42, A42, B42, C43, D43, E43, F#43, G43, A43, B43, C44, D44, E44, F#44, G44, A44, B44, C45, D45, E45, F#45, G45, A45, B45, C46, D46, E46, F#46, G46, A46, B46, C47, D47, E47, F#47, G47, A47, B47, C48, D48, E48, F#48, G48, A48, B48, C49, D49, E49, F#49, G49, A49, B49, C50, D50, E50, F#50, G50, A50, B50, C51, D51, E51, F#51, G51, A51, B51, C52, D52, E52, F#52, G52, A52, B52, C53, D53, E53, F#53, G53, A53, B53, C54, D54, E54, F#54, G54, A54, B54, C55, D55, E55, F#55, G55, A55, B55, C56, D56, E56, F#56, G56, A56, B56, C57, D57, E57, F#57, G57, A57, B57, C58, D58, E58, F#58, G58, A58, B58, C59, D59, E59, F#59, G59, A59, B59, C60, D60, E60, F#60, G60, A60, B60, C61, D61, E61, F#61, G61, A61, B61, C62, D62, E62, F#62, G62, A62, B62, C63, D63, E63, F#63, G63, A63, B63, C64, D64, E64, F#64, G64, A64, B64, C65, D65, E65, F#65, G65, A65, B65, C66, D66, E66, F#66, G66, A66, B66, C67, D67, E67, F#67, G67, A67, B67, C68, D68, E68, F#68, G68, A68, B68, C69, D69, E69, F#69, G69, A69, B69, C70, D70, E70, F#70, G70, A70, B70, C71, D71, E71, F#71, G71, A71, B71, C72, D72, E72, F#72, G72, A72, B72, C73, D73, E73, F#73, G73, A73, B73, C74, D74, E74, F#74, G74, A74, B74, C75, D75, E75, F#75, G75, A75, B75, C76, D76, E76, F#76, G76, A76, B76, C77, D77, E77, F#77, G77, A77, B77, C78, D78, E78, F#78, G78, A78, B78, C79, D79, E79, F#79, G79, A79, B79, C80, D80, E80, F#80, G80, A80, B80, C81, D81, E81, F#81, G81, A81, B81, C82, D82, E82, F#82, G82, A82, B82, C83, D83, E83, F#83, G83, A83, B83, C84, D84, E84, F#84, G84, A84, B84, C85, D85, E85, F#85, G85, A85, B85, C86, D86, E86, F#86, G86, A86, B86, C87, D87, E87, F#87, G87, A87, B87, C88, D88, E88, F#88, G88, A88, B88, C89, D89, E89, F#89, G89, A89, B89, C90, D90, E90, F#90, G90, A90, B90, C91, D91, E91, F#91, G91, A91, B91, C92, D92, E92, F#92, G92, A92, B92, C93, D93, E93, F#93, G93, A93, B93, C94, D94, E94, F#94, G94, A94, B94, C95, D95, E95, F#95, G95, A95, B95, C96, D96, E96, F#96, G96, A96, B96, C97, D97, E97, F#97, G97, A97, B97, C98, D98, E98, F#98, G98, A98, B98, C99, D99, E99, F#99, G99, A99, B99, C100, D100, E100, F#100, G100, A100, B100, C101, D101, E101, F#101, G101, A101, B101, C102, D102, E102, F#102, G102, A102, B102, C103, D103, E103, F#103, G103, A103, B103, C104, D104, E104, F#104, G104, A104, B104, C105, D105, E105, F#105, G105, A105, B105, C106, D106, E106, F#106, G106, A106, B106, C107, D107, E107, F#107, G107, A107, B107, C108, D108, E108, F#108, G108, A108, B108, C109, D109, E109, F#109, G109, A109, B109, C110, D110, E110, F#110, G110, A110, B110, C111, D111, E111, F#111, G111, A111, B111, C112, D112, E112, F#112, G112, A112, B112, C113, D113, E113, F#113, G113, A113, B113, C114, D114, E114, F#114, G114, A114, B114, C115, D115, E115, F#115, G115, A115, B115, C116, D116, E116, F#116, G116, A116, B116, C117, D117, E117, F#117, G117, A117, B117, C118, D118, E118, F#118, G118, A118, B118, C119, D119, E119, F#119, G119, A119, B119, C120, D120, E120, F#120, G120, A120, B120, C121, D121, E121, F#121, G121, A121, B121, C122, D122, E122, F#122, G122, A122, B122, C123, D123, E123, F#123, G123, A123, B123, C124, D124, E124, F#124, G124, A124, B124, C125, D125, E125, F#125, G125, A125, B125, C126, D126, E126, F#126, G126, A126, B126, C127, D127, E127, F#127, G127, A127, B127, C128, D128, E128, F#128, G128, A128, B128, C129, D129, E129, F#129, G129, A129, B129, C130, D130, E130, F#130, G130, A130, B130, C131, D131, E131, F#131, G131, A131, B131, C132, D132, E132, F#132, G132, A132, B132, C133, D133, E133, F#133, G133, A133, B133, C134, D134, E134, F#134, G134, A134, B134, C135, D135, E135, F#135, G135, A135, B135, C136, D136, E136, F#136, G136, A136, B136, C137, D137, E137, F#137, G137, A137, B137, C138, D138, E138, F#138, G138, A138, B138, C139, D139, E139, F#139, G139, A139, B139, C140, D140, E140, F#140, G140, A140, B140, C141, D141, E141, F#141, G141, A141, B141, C142, D142, E142, F#142, G142, A142, B142, C143, D143, E143, F#143, G143, A143, B143, C144, D144, E144, F#144, G144, A144, B144, C145, D145, E145, F#145, G145, A145, B145, C146, D146, E146, F#146, G146, A146, B146, C147, D147, E147, F#147, G147, A147, B147, C148, D148, E148, F#148, G148, A148, B148, C149, D149, E149, F#149, G149, A149, B149, C150, D150, E150, F#150, G150, A150, B150, C151, D151, E151, F#151, G151, A151, B151, C152, D152, E152, F#152, G152, A152, B152, C153, D153, E153, F#153, G153, A153, B153, C154, D154, E154, F#154, G154, A154, B154, C155, D155, E155, F#155, G155, A155, B155, C156, D156, E156, F#156, G156, A156, B156, C157, D157, E157, F#157, G157, A157, B157, C158, D158, E158, F#158, G158, A158, B158, C159, D159, E159, F#159, G159, A159, B159, C160, D160, E160, F#160, G160, A160, B160, C161, D161, E161, F#161, G161, A161, B161, C162, D162, E162, F#162, G162, A162, B162, C163, D163, E163, F#163, G163, A163, B163, C164, D164, E164, F#164, G164, A164, B164, C165, D165, E165, F#165, G165, A165, B165, C166, D166, E166, F#166, G166, A166, B166, C167, D167, E167, F#167, G167, A167, B167, C168, D168, E168, F#168, G168, A168, B168, C169, D169, E169, F#169, G169, A169, B169, C170, D170, E170, F#170, G170, A170, B170, C171, D171, E171, F#171, G171, A171, B171, C172, D172, E172, F#172, G172, A172, B172, C173, D173, E173, F#173, G173, A173, B173, C174, D174, E174, F#174, G174, A174, B174, C175, D175, E175, F#175, G175, A175, B175, C176, D176, E176, F#176, G176, A176, B176, C177, D177, E177, F#177, G177, A177, B177, C178, D178, E178, F#178, G178, A178, B178, C179, D179, E179, F#179, G179, A179, B179, C180, D180, E180, F#180, G180, A180, B180, C181, D181, E181, F#181, G181, A181, B181, C182, D182, E182, F#182, G182, A182, B182, C183, D183, E183, F#183, G183, A183, B183, C184, D184, E184, F#184, G184, A184, B184, C185, D185, E185, F#185, G185, A185, B185, C186, D186, E186, F#186, G186, A186, B186, C187, D187, E187, F#187, G187, A187, B187, C188, D188, E188, F#188, G188, A188, B188, C189, D189, E189, F#189, G189, A189, B189, C190, D190, E190, F#190, G190, A190, B190, C191, D191, E191, F#191, G191, A191, B191, C192, D192, E192, F#192, G192, A192, B192, C193, D193, E193, F#193, G193, A193, B193, C194, D194, E194, F#194, G194, A194, B194, C195, D195, E195, F#195, G195, A195, B195, C196, D196, E196, F#196, G196, A196, B196, C197, D197, E197, F#197, G197, A197, B197, C198, D198, E198, F#198, G198, A198, B198, C199, D199, E199, F#199, G199, A199, B199, C200, D200, E200, F#200, G200, A200, B200, C201, D201, E201, F#201, G201, A201, B201, C202, D202, E202, F#202, G202, A202, B202, C203, D203, E203, F#203, G203, A203, B203, C204, D204, E204, F#204, G204, A204, B204, C205, D205, E205, F#205, G205, A205, B205, C206, D206, E206, F#206, G206, A206, B206, C207, D207, E207, F#207, G207, A207, B207, C208, D208, E208, F#208, G208, A208, B208, C209, D209, E209, F#209, G209, A209, B209, C210, D210, E210, F#210, G210, A210, B210, C211, D211, E211, F#211, G211, A211, B211, C212, D212, E212, F#212, G212, A212, B212, C213, D213, E213, F#213, G213, A213, B213, C214, D214, E214, F#214, G214, A214, B214, C215, D215, E215, F#215, G215, A215, B215, C216, D216, E216, F#216, G216, A216, B216, C217, D217, E217, F#217, G217, A217, B217, C218, D218, E218, F#218, G218, A218, B218, C219, D219, E219, F#219, G219, A219, B219, C220, D220, E220, F#220, G220, A220, B220, C221, D221, E221, F#221, G221, A221, B221, C222, D222, E222, F#222, G222, A222, B222, C223, D223, E223, F#223, G223, A223, B223, C224, D224, E224, F#224, G224, A224, B224, C225, D225, E225, F#225, G225, A225, B225, C226, D226, E226, F#226, G226, A226, B226, C227, D227, E227, F#227, G227, A227, B227, C228, D228, E228, F#228, G228, A228, B228, C229, D229, E229, F#229, G229, A229, B229, C230, D230, E230, F#230, G230, A230, B230, C231, D231, E231, F#231, G231, A231, B231, C232, D232, E232, F#232, G232, A232, B232, C233, D233, E233, F#233, G233, A233, B233, C234, D234, E234, F#234, G234, A234, B234, C235, D235, E235, F#235, G235, A235, B235, C236, D236, E236, F#236, G236, A236, B236, C237, D237, E237, F#237, G237, A237, B237, C238, D238, E238, F#238, G238, A238, B238, C239, D239, E239, F#239, G239, A239, B239, C240, D240, E240, F#240, G240, A240, B240, C241, D241, E241, F#241, G241, A241, B241, C242, D242, E242, F#242, G242, A242, B242, C243, D243, E243, F#243, G243, A243, B243, C244, D244, E244, F#244, G244, A244, B244, C245, D245, E245, F#245, G245, A245, B245, C246, D246, E246, F#246, G246, A246, B246, C247, D247, E247, F#247, G247, A247, B247, C248, D248, E248, F#248, G248, A248, B248, C249, D249, E249, F#249, G249, A249, B249, C250, D250, E250, F#250, G250, A250, B250, C251, D251, E251, F#251, G251, A251, B251, C252, D252, E252, F#252, G252, A252, B252, C253, D253, E253, F#253, G253, A253, B253, C254, D254, E254, F#254, G254, A254, B254, C255, D255, E255, F#255, G255, A255, B255, C256, D256, E256, F#256, G256, A256, B256, C257, D257, E257, F#257, G257, A257, B257, C258, D258, E258, F#258, G258, A258, B258, C259, D259, E259, F#259, G259, A259, B259, C260, D260, E260, F#260, G260, A260, B260, C261, D261, E261, F#261, G261, A261, B261, C262, D262, E262, F#262, G262, A262, B262, C263, D263, E263, F#263, G263, A263, B263, C264, D264, E264, F#264, G264, A264, B264, C265, D265, E265, F#265, G265, A265, B265, C266, D266, E266, F#266, G266, A266, B266, C267, D267, E267, F#267, G267, A267, B267, C268, D268, E268, F#268, G268, A268, B268, C269, D269, E269, F#269, G269, A269, B269, C270, D270, E270, F#270, G270, A270, B270, C271, D271, E271, F#271, G271, A271, B271, C272, D272, E272, F#272, G272, A272, B272, C273, D273, E273, F#273, G273, A273, B273, C274, D274, E274, F#274, G274, A274, B274, C275, D275, E275, F#275, G275, A275, B275, C276, D276, E276, F#276, G276, A276, B276, C277, D277, E277, F#277, G277, A277, B277, C278, D278, E278, F#278, G278, A278, B278, C279, D279, E279, F#279, G279, A279, B279, C280, D280, E280, F#280, G280, A280, B280, C281, D281, E281, F#281, G281, A281, B281, C282, D282, E282, F#282, G282, A282, B282, C283, D283, E283, F#283, G283, A283, B283, C284, D284, E284, F#284, G284, A284, B284, C285, D285, E285, F#285, G285, A285, B285, C286, D286, E286, F#286, G286, A286, B286, C287, D287, E287, F#287, G287, A287, B287, C288, D288, E288, F#288, G288, A288, B288, C289, D289, E289, F#289, G289, A289, B289, C290, D290, E290, F#290, G290, A290, B290, C291, D291, E291, F#291, G291, A291, B291, C292, D292, E292, F#292, G292, A292, B292, C293, D293, E293, F#293, G293, A293, B293, C294, D294, E294, F#294, G294, A294, B294, C295, D295, E295, F#295, G295, A295, B295, C296, D296, E296, F#296, G296, A296, B296, C297, D297, E297, F#297, G297, A297, B297, C298, D298, E298, F#298, G298, A298, B298, C299, D299, E299, F#299, G299, A299, B299, C300, D300, E300, F#300, G300, A300, B300, C301, D301, E301, F#301, G301, A301, B301, C302, D302, E302, F#302, G302, A302, B302, C303, D303, E303, F#303, G303, A303, B303, C304, D304, E304, F#304, G304, A304, B304, C305, D305, E305, F#305, G305, A305, B305, C306, D306, E306, F#306, G306, A306, B306, C307, D307, E307, F#307, G307, A307, B307, C308, D308, E308, F#308, G308, A308, B308, C309, D309, E309, F#309, G309, A309, B309, C310, D310, E310, F#310, G310, A310, B310, C311, D311, E311, F#311, G311, A311, B311, C312, D312, E312, F#312, G312, A312, B312, C313, D313, E313, F#313, G313, A313, B313, C314, D314, E314, F#314, G314, A314, B314, C315, D315, E315, F#315, G315, A315, B315, C316, D316, E316, F#316, G316, A316, B316, C317, D317, E317, F#317, G317, A317, B317, C318, D318, E318, F#318, G318, A318, B318, C319, D319, E319, F#319, G319, A319, B319, C320, D320, E320, F#320, G320, A320, B320, C321, D321, E321, F#321, G321, A321, B321, C322, D322, E322, F#322, G322, A322, B322, C323, D323, E323, F#323, G323, A323, B323, C324, D324, E324, F#324, G324, A324, B324, C325, D325, E325, F#325, G325, A325, B325, C326, D326, E326, F#326, G326, A326, B326, C327, D327, E327, F#327, G327, A327, B327, C328, D328, E328, F#328, G328, A328, B328, C329, D329, E329, F#329, G329, A329, B329, C330, D330, E330, F#330, G330, A330, B330, C331, D331, E331, F#331, G331, A331, B331, C332, D332, E332, F#332, G332, A332, B332, C333, D333, E333, F#333, G333, A333, B333, C334, D334, E334, F#334, G334, A334, B334, C335, D335, E335, F#335, G335, A335, B335, C336, D336, E336, F#336, G336, A336, B336, C337, D337, E337, F#337, G337, A337, B337, C338, D338, E338, F#338, G338, A338, B338, C339, D339, E339, F#339, G339, A339, B339, C340, D340, E340, F#340, G340, A340, B340, C341, D341, E341, F#341, G341, A341, B341, C342, D342, E342, F#342, G342, A342, B342, C343, D343, E343, F#343, G343, A343, B343, C344, D344, E344, F#344, G344, A344, B344, C345, D345, E345, F#345, G345, A345, B345, C346, D346, E346, F#346, G346, A346, B346, C347, D347, E347, F#347, G347, A347, B347, C348, D348, E348, F#348, G348, A348, B348, C349, D349, E349, F#349, G349, A349, B349, C350, D350, E350, F#350, G350, A350, B350, C351, D351, E351, F#351, G351, A351, B351, C352, D352, E352, F#352, G352, A352, B352, C353, D353, E353, F#353, G353, A353, B353, C354, D354, E354, F#354, G354, A354, B354, C355, D355, E355, F#355, G355, A355, B355, C356, D356, E356, F#356, G356, A356, B356, C357, D357, E357, F#357, G357, A357, B357, C358, D358, E358, F#358, G358, A358, B358, C359, D359, E359, F#359, G359, A359, B359, C360, D360, E360, F#360, G3

33. Ноты РЕ-МИ-ФА диез-СОЛЬ

Exercise 33 consists of two staves of music in bass clef with a 4/4 time signature. The first staff begins with a '4' above the first note. The melody is composed of eighth and quarter notes, with slurs indicating phrasing across the lines.

34. Ноты РЕ-МИ-ФА диез-СОЛЬ-ЛЯ

Exercise 34 consists of seven staves of music in bass clef with a 4/4 time signature. The first staff begins with a '5' above the first note. The melody is composed of half and quarter notes, with slurs indicating phrasing across the lines.

35.

35. Musical notation for exercise 35, consisting of four staves of bass clef music in 3/4 time. The first staff has a '5' above the first note and a '2' above the eighth note. The notes are: G2, A2, B2, C3, D3, E3, F3, G3. The second staff has notes: G3, F3, E3, D3, C3, B2, A2, G2. The third staff has notes: G2, A2, B2, C3, D3, E3, F3, G3. The fourth staff has notes: G3, F3, E3, D3, C3, B2, A2, G2.

36. Ноты ДО-РЕ-МИ

36. Ноты ДО-РЕ-МИ. Musical notation for exercise 36, consisting of three staves of bass clef music in 4/4 time. The first staff has a '3' above the first note. The notes are: G2, A2, B2, C3, D3, E3, F3, G3. The second staff has notes: G3, F3, E3, D3, C3, B2, A2, G2. The third staff has notes: G2, A2, B2, C3, D3, E3, F3, G3.

37. Ноты ДО-РЕ-МИ-ФА

37. Ноты ДО-РЕ-МИ-ФА. Musical notation for exercise 37, consisting of four staves of bass clef music in 4/4 time. The first staff has a '4' above the first note. The notes are: G2, A2, B2, C3, D3, E3, F3, G3. The second staff has notes: G3, F3, E3, D3, C3, B2, A2, G2. The third staff has notes: G2, A2, B2, C3, D3, E3, F3, G3. The fourth staff has notes: G3, F3, E3, D3, C3, B2, A2, G2.

40

Exercise 40 consists of four staves of music in bass clef and 4/4 time. The first staff begins with a finger number '5' above the first note. Each staff contains a sequence of notes connected by a long slur, with some notes marked with fingerings (5, 4, 3, 2, 1, 2, 3, 4, 5).

41.

Exercise 41 consists of four staves of music in bass clef and 2/4 time. The first staff begins with a finger number '5' above the first note. Each staff contains a sequence of notes connected by a long slur, with some notes marked with fingerings (5, 4, 3, 2, 1, 2, 3, 4, 5).

42. Ноты СИ большой октавы, ДО диэз-РЕ малой октавы

Exercise 42 consists of two staves of music in bass clef and 2/4 time. The first staff begins with a finger number '3' above the first note. Each staff contains a sequence of notes connected by a long slur, with some notes marked with fingerings (3, 2, 1, 2, 3, 4, 5).

46. Ноты ЛЯ-СИ-ДО-РЕ

46. Ноты ЛЯ-СИ-ДО-РЕ

47. Ноты ЛЯ-СИ-ДО-РЕ-МИ

47. Ноты ЛЯ-СИ-ДО-РЕ-МИ

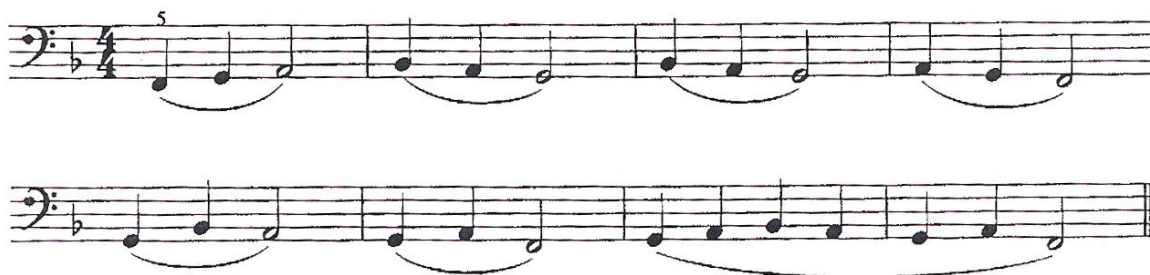
48.

48.

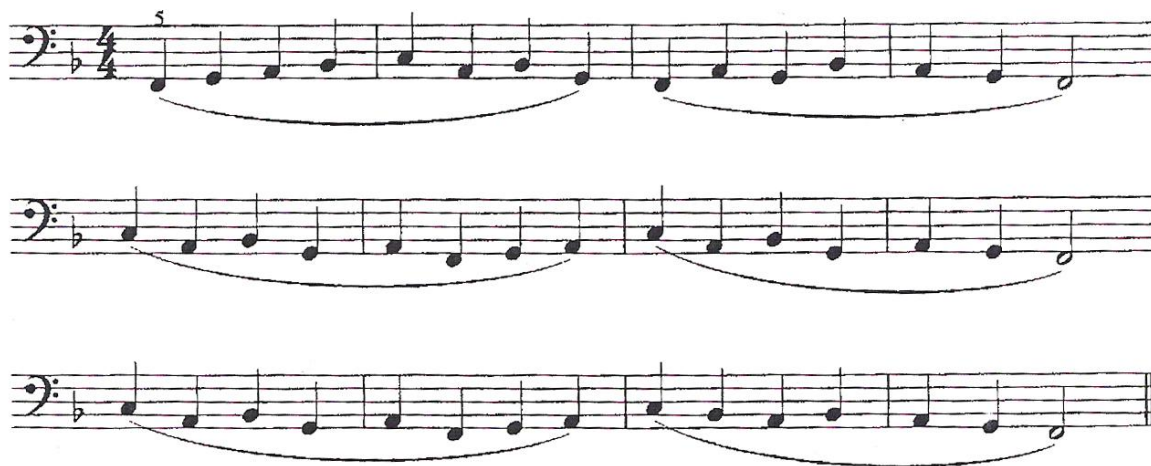
49. Ноты СОЛЬ-ЛЯ-СИ большой октавы

52. Ноты СОЛЬ-ЛЯ-СИ-ДО-РЕ

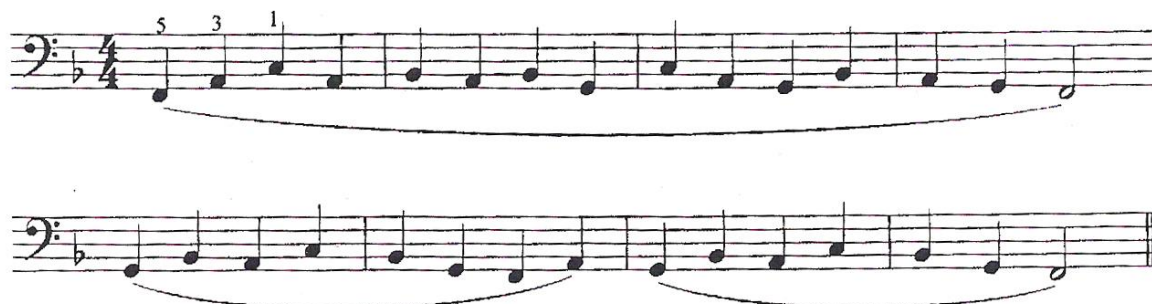
55. Ноты ФА-СОЛЬ-ЛЯ-СИ бемоль большой октавы



56. Ноты ФА-СОЛЬ-ЛЯ-СИ бемоль-ДО



57.



58. Ноты МИ-ФА диез-СОЛЬ большой октавы

62. Ноты РЕ-МИ-ФА большой октавы

Exercise 62 consists of two staves of bass clef music in 2/4 time. The first staff begins with a '3' above the first note. The notes in both staves are: G₂, A₂, B₂, C₃, D₃, E₃, F₃, G₃, A₃, B₃, C₄, D₄, E₄, F₄, G₄. Slurs are placed under the first six notes of each staff.

63.

Exercise 63 consists of four staves of bass clef music in 3/4 time. The first staff begins with a '4' above the first note. The notes in all staves are: G₂, A₂, B₂, C₃, D₃, E₃, F₃, G₃, A₃, B₃, C₄, D₄, E₄, F₄, G₄. Slurs are placed under the notes across the staves.

64.

Exercise 64 consists of two staves of bass clef music in 4/4 time. The first staff begins with a '5' above the first note and a '1' above the eighth note. The notes in both staves are: G₂, A₂, B₂, C₃, D₃, E₃, F₃, G₃, A₃, B₃, C₄, D₄, E₄, F₄, G₄. Slurs are placed under the notes across the staves.

